



CLIVEDEN

CORPORATE EVENTS



CONTENTS

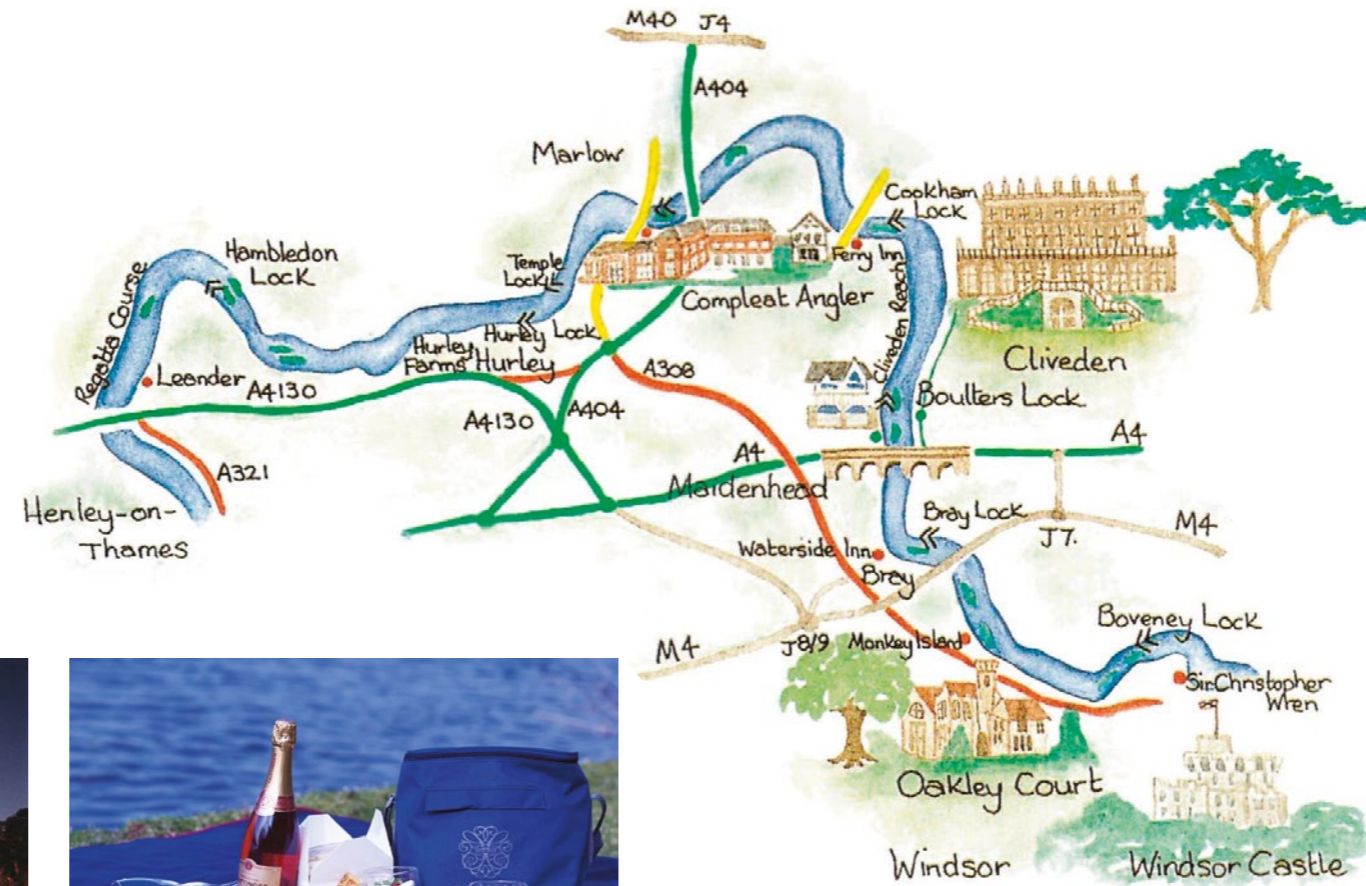
MESSING ABOUT <i>in</i> BOATS	2 - 5
PLEASURE, FROLIC <i>and</i> EXTRAVAGANT DIVERSIONS	6 - 11
THE TALK <i>of</i> THE TOWN	12 - 15
HORSE POWER, GUN POWDER <i>and</i> OLYMPIC GOLD	16 - 19
EXTREMELY SPORTING AND TEAM BUILDING	21 - 24
EAT, DRINK <i>and</i> BE MERRY	25 - 27
CLIVEDEN: ALWAYS <i>in</i> FASHION	28 - 29



MESSING ABOUT *in* BOATS

MESSING ABOUT IN BOATS

With its dramatic position above the Thames and its own dock and boathouse on Cliveden Reach, Cliveden offers a brilliant opportunity to explore one of the prettiest and most interesting stretches of the river. Any group size can be accommodated in style; whether on one of the hotel's lovingly restored flotilla of beautiful vintage launches or on a variety of other luxurious and interesting vessels operated by select local suppliers. Enjoy an afternoon floating down the river with a picnic on board, a pre-dinner Champagne cruise or even a unique water-based meeting to get the ideas 'flowing'. There's no better way to explore some of the most interesting and historic sights in England.



COOKHAM

Upstream from Cliveden is the charming village of Cookham with its mix of rustic workmen's cottages and grand Georgian and Victorian houses. The High Street is packed with excellent restaurants and pubs, the oldest dating from 1417. In 1908 Kenneth Grahame, author of *Wind in The Willows*, returned to Cookham and spent his time "simply messing about in boats" much like the animal characters in his famed book. Images of Cookham can be seen at the Stanley Spencer Gallery: Spencer was born on the High Street and was much influenced by the river, and the gallery is available for private viewings.

BRAY

Down the river is the lovely village of Bray with its attractive houses and thatched cottages dating back to the 16th century and earlier. Bray has become synonymous with exquisite dining experiences and now boasts three of Heston Blumenthal's restaurants: The Fat Duck, The Hinds Head and The Crown – as well as the famous French eatery the Waterside Inn. The river can also be accessed from the delightful Edwardian Marquee with its ample events space and sweeping lawn, peacefully situated on the banks of the Thames.

DORNEY

Before reaching Eton, the Thames passes through Dorney where a visit to Dorney Court is a fascinating experience. Built in 1440 and owned by generations of the same family for over 400 years, its atmospheric rooms are full of character and history with original 15th and 16th century art and furnishings. Dorney Lake hosted the Rowing and Kayak events during the 2012 Olympic and Paralympic Games; and multi-boat regattas, raft-building, orienteering and dragon boating can be arranged.

ETON

Eton College, founded in 1440 by King Henry VI, is one of the oldest schools in the country and is an integral part of the national heritage. Eton High Street is crammed with lovely shops, pubs and restaurants, most of which were originally established for the benefit of the boys and masters of the College. There are many Tudor and Victorian buildings of historical importance and visitors can walk freely through the College grounds or enjoy a private guided tour to understand the school's remarkable history and traditions.

WINDSOR

Windsor Castle is the oldest and largest inhabited castle in the world. It has been the family home of British Kings and Queens for almost 1,000 years and is an official residence of Her Majesty The Queen, whose standard flies from the Round Tower when she is in residence. The Queen spends most of her private weekends at Windsor and the Castle is still very much a working royal palace. Once it has closed to the public for the day, enjoy an exclusive 'behind-the-ropes' experience with an expert guide in the Castle's magnificent State Apartments and St. George's Chapel.



Image: Gareth Richards





PLEASURE, FROLIC *and*
EXTRAVAGANT DIVERSIONS

PLEASURE, FROLIC AND EXTRAVAGANT DIVERSIONS

Cliveden's dramatic history includes philandering Dukes, America's 'richest citizen', house parties for prime ministers and visits by Queen Victoria (though not necessarily in that order). Cliveden House has played host to every British monarch since George I and has been home to three Dukes, an Earl and Frederick Prince of Wales. And let's not forget the famous (or rather infamous) swim which ultimately led to the downfall of a government (remember the Profumo Affair?) - this is no doubt why Cliveden has the only listed outdoor swimming pool in Britain!



THE CLIVEDEN QUEST

Cliveden House Tablet Treasure Hunts are engaging, fun and competitive. Embracing the history of the Grade I listed estate, you will be sent back into time on a mission to complete as many challenging questions and tasks as you can. Along the way you may bump in to some significant figures from the House's 350-year past, so it's important to keep your eyes peeled!



Each team will be issued with a Nexus 7 Tablet pre-loaded with an interactive map of the hotel and the estate's extensive grounds, along with the questions and challenges. It will be possible to track the location of the other teams in order to stay ahead of the game. Points will be scored for correct answers and debited for incorrect ones, so it's key to think carefully. As challenges are completed and questions answered the team scores will be displayed on a live leader board with the winner announced at the end of the time allotted.



DOWNTON ABBEY

A fun and immersive experience, each member of your party will be given a role and function within familiar plotlines. If you know about an inappropriate relationship, is honour best served by telling or by keeping the secret – or is honour dead and blackmail the way forward? If you have a burning passion (for politics or a person), is it something you need to shout about or can you keep it quiet?

Is ambition a good thing or will it warp you to evil acts? With period detail, some classic lines and plot twists aplenty, your party will be fully involved in the feuds, alliances and intrigues of this great house drama.



UPSTAIRS, DOWNSTAIRS

It will be up to you who gets to serve below stairs and who is waited on above. You will be instructed in the rules of engagement for masters and servants, mistresses and maids, as required in the early years of the twentieth century. Formality is the order of the day and standards of behaviour are strict, and there will be penalties for stepping outside the rules. But, if you excel at your role, you may be highly rewarded.

THE PROFUMO AFFAIR

Get groovy in the Swinging Sixties! There's an upmarket party going on at the big house, but all the hip and happening chicks and dudes are hanging out by the pool. Join a varied cast of gate-crashers and high society types and experience the inside story of the scandal that rocked the decade and brought down a government. Fab sixties outfits and top pop sounds are what's cool and 'in' when you make the scene.





CLIVEDEN AT CHRISTMAS

Join a cast of famous Victorians for all the fun and games of a traditional 19th century Christmas celebration. The food and drink will be themed to the experience; and with music and dancing of the period, playlets, carols, readings by Mr. Dickens of his own works, and even the presence of royalty, a very merry time will be had by all.



PROTECTING LORD ASTOR'S INHERITANCE

William Waldorf Astor's eldest son Waldorf married Nancy Langhorne in 1906 and the couple received Cliveden as a wedding gift. Cliveden entered a new glittering era as the venue for many parties hosted by the Astors.

The dramatic premise of this fully themed and interactive event is that Lord Astor's claim to the ownership of his family estate is challenged by someone purporting to be the rightful heir to Cliveden House. Before the event guests each receive a personalised letter from Lord Astor 'summoning' them to Cliveden. Using professional actors as Lord Astor and his staff, the guests must work as teams to explore the beautiful estate and beyond, to find clues, complete challenges and discover information to dispute the usurper's claim, using every means at their disposal. This action-packed adventure, amidst some of the most beautiful grounds and countryside in Berkshire, ensures participants a day of elegance, drama and style.

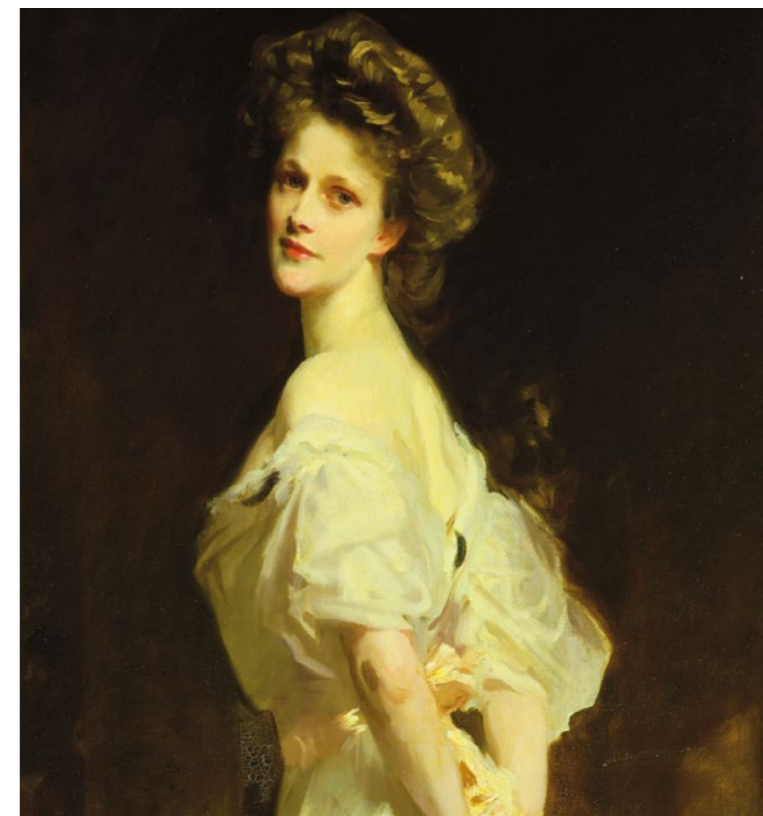


THE ARTIST'S STUDIO

During his time in Italy, William Waldorf Astor developed a love of classical sculpture and art and brought many pieces back to Cliveden accumulating a sizeable and valuable collection. Against this dramatic backdrop, the group is challenged to create an over-sized reproduction of one of the masterpieces from this impressive collection.

Guests will be split into teams, with each completing one part of the final artwork, working together to collect inspiration and materials. Artistic talent is not a requirement to take part as there are many different roles to be filled. Teams will complete a series of challenges as part of the overall project testing both their mental and visual abilities, as well as their engineering skills.

At the end of the session the individual pieces are joined together to recreate the masterpiece, demonstrating the benefits that can be achieved through strong team work. Participants become aware of the 'bigger picture' rather than purely focusing on individual tasks, demonstrating that teamwork gets better results than working alone.



DRAWING ON HISTORY

Many noted artists are among the famous guests who visited Cliveden in the last century including John Singer Sargent, Sir Stanley Spencer, Sir Alfred Munnings and the now infamous Stephen Ward to name but a few. Attracted by the House's grand Italianate design and exquisite grounds, they were left inspired by its beauty and drama. Guests can now enjoy a similar opportunity to capture Cliveden in art with exclusive drawing classes led by an expert professional artist. In a small informal group, participants will sketch interior or exterior views according to the season, with tuition suited for all abilities. They will leave with their completed drawing as a very personal memento of their stay.




SHERLOCK

The game is afoot at Cliveden! Experience the excitement of one of Holmes' most challenging cases in this fun and stimulating event. Arriving for drinks to the strains of a violin, the master sleuth will outline the details of a case that he is finding particularly perplexing. He will then leave it to you to solve the mystery, matching your deductive abilities against those of the other guests, whilst tracing the threads of evidence throughout the House. Calling on your ingenuity and powers of observation you will interview suspects, search the newspapers for clues, and put together the facts to reach a solution and the dénouement will be presented at the start of dinner.

TREASURE OR TOSH?

Like 'Antiques Road Show' but with a twist, guests will enter a room filled with a variety of collectables and will be challenged to determine which ones are valuable antiques and which are car boot classics. With items from the elegant to the bizarre, budding antique dealers will be encouraged to inspect each piece to estimate its value and guess its provenance. An expert will be on hand to confirm or refute the participants' assessments. It's a fun and sophisticated icebreaker and an ideal accompaniment to pre-dinner drinks.



A detailed oil painting of a man in 18th-century attire. He has a large, voluminous white powdered wig with tight curls. His face is pale with rosy cheeks and blue eyes. He is wearing a white lace cravat and a coat with a thick white fur collar. The coat is adorned with several circular medals or orders of merit, featuring red centers and gold borders. The background is dark and indistinct.

THE TALK *of* THE TOWN

THE TALK OF THE TOWN

Looking for a topical speaker with an interesting past? Working with the oldest and most experienced costumed historical interpretation company in the UK, Cliveden offers bespoke speakers for corporate clients wishing to inform and entertain. The talks are all meticulously researched with sensitivity, intelligence and humour.



QUEEN ELIZABETH I

What glass ceiling?
Being a woman on top – and how to stay there.

SIR CHRISTOPHER WREN

The management of large-scale projects from a seventeenth century perspective.

ISAMBARD KINGDOM BRUNEL

Designing for the future.

QUEEN VICTORIA

The original Empress of globalisation.

WINSTON CHURCHILL

Who could have more to say about motivation?

DUKE OF MARLBOROUGH / LORD NELSON

When it comes to taking risks, these speakers know how to conquer the fear of defeat.



MRS. BEETON

Successful recipes from the first ‘domestic goddess’.

MADAME DE POMPADOUR

How does one attract the attention of the man who has everything? Get tips from the lady who reigned supreme as the chief official mistress of King Louis XV of France.

BEAU BRUMMEL

Dress for success.

OSCAR WILDE

Social networking and the pitfalls of celebrity.

FLORENCE NIGHTINGALE

How individual contributions can make a difference.

CHARLES DARWIN

If you have a bold idea, be bold enough to own it.

GRACE AND FAVOUR

The experiences of the highest tiers of the British aristocracy, both past and present, are brought vividly to life by two very special ‘friends’ of Cliveden. As speakers for larger groups or welcome guests at more intimate gatherings, these two insiders offer fascinating insights into the social history and evolution of the English country house as a political power house, a setting for the display of art and craftsmanship, a self-contained community, and a symbol of both continuity and change in today’s world.

JESSICA FELLOWES

Best known for her work as author of five official companion books to a certain hit television show, *Downton Abbey*, four of her books have made it into *The New York Times* bestseller lists and she is in much demand as a speaker at events in the UK and US. As the niece of creator and scriptwriter Julian Fellowes, Jessica will share the identities of the real-life inspirations for the show, both historical characters and members of her extended family.

As the former deputy editor of *Country Life*, Jessica also wrote the magazine’s *Townie’s Guide to Country Weekends*. The latter formed the basis of her first book, *Mud & the City: Dos and Don’ts for Townies in the Country*.





LORD MAURICE FERMOY

Lord Maurice Fermoy, an expert on British etiquette, will entertain and instruct you in English manners, aristocratic traditions and British society. His subjects range from Coats of Arms, Dining Etiquette, Old School Ties, History of the Aristocracy, Meeting the Royal Family, Drinks Parties, Dress Codes, and Scandalous English Country House Behaviour – all liberally embellished with stories and anecdotes. As first cousin to the late Diana Princess of Wales, and with a background including Eton, the Household Cavalry, and acting as a Page of Honour to Queen Elizabeth, Lord Fermoy brings truly first-hand experience to these themes.

LADY PENNY MOUNTBATTEN

Penny Mountbatten has been running formal and informal British etiquette courses for many years. Whilst it isn't necessary for everyone to learn how to curtsy to HM The Queen, if you want to interact with British people in a formal setting, it is essential to understand the significance placed on visual and subliminal signals. Penny's tailored and fully immersive courses are designed to familiarise guests with the nuances of British culture, customs and protocols. Penny's talks cover subjects such as: British social etiquette, the social season, customs and protocol, business etiquette, the faultless guest and the faultless host.





HORSE POWER, GUN POWDER
and OLYMPIC GOLD

HORSE POWER, GUN POWDER & OLYMPIC GOLD

Perched high on the cliff with spectacular views across the Thames Valley, Cliveden has long been a playground for the lifestyles of the royal and rich, and the famous and powerful. Experience the good life with exclusive adrenaline-filled activities within easy reach of the estate.

POLO

Set in 70 acres of beautiful Berkshire countryside, this privately-owned estate offers an exclusive insight into the world of polo. Just 20 minutes from Cliveden, Emsworth is home to one of the UK's most successful polo teams. Its world-class facilities provide the perfect backdrop to any retreat, ensuring a welcoming and exhilarating introduction to this quintessentially English sport, be it as a learn-to-play experience or an entirely bespoke activity. Emsworth's experienced team and superb facilities operate throughout the year offering polo during both the summer and winter seasons. No previous riding experience is necessary.



SUPERCARS

Cliveden can offer you access to a range of the world's top supercars including the Lamborghini Huracan Spyder, Ferrari 458 Spider, Aston Martin V12 Vantage, Lamborghini LP570 Performante, Ferrari California, Bentley GTC V8, Mercedes GT AMG, Maserati GranCabrio Sport and Range Rover Vogue Autobiography, to name but a few.

Enjoy the thrill of driving your chosen supercar, either on a pre-selected route or to a destination of your choice. Packages range from short driving experiences to full day excursions tailored to your preferences. Self-drive hire is available to all guests and can be arranged for 24 hours or more.



ESCAPE TO THE LAKE

Set in scenic parkland a short drive from Cliveden, Dorney Lake is a world-class sporting venue with an exceptional heritage offering a stunning backdrop for a customised event.

Home of the British Olympic Rowing Team where Team GB famously won a total of 9 medals in 2012, Dorney Lake is an inspiring location for water-based team events in which your participants will be compete for their own sporting glory.

Team activities include various rowing disciplines, dragon boat racing or, if you like it wet and wild, raft building. If you prefer to stay dry, you can enjoy country sports, treasure hunts or Olympic-style challenges on the venue's 400 acres of grounds. Or combine both land and water with an exciting triathlon.

Join the ranks of the finest sporting heroes and challenge your team to strive for success at Dorney Lake. Events can be combined with a lake-side lunch or a visit to nearby Windsor.



SHOOTING OFF PROPERTY

The names Holland and Holland and E. J. Churchill have been synonymous with the finest handmade English shotguns for over 150 years and you can enjoy a visit to these prestigious gunmakers' award-winning shooting grounds. Set amidst acres of stunning woodland, both sites are just 30 minutes from Cliveden and feature over 100 clay shooting stands offering a variety of shooting disciplines. The dedicated team of instructors are amongst the most experienced in the country and provide clay pigeon shooting instruction for novices through to experienced game and clay shooters.



AND FOR SOMETHING COMPLETELY DIFFERENT...



SEGWAY ADVENTURE

A Segway personal transporter is a clever self-balancing machine controlled by a rider's movements making it easy to operate and master. A Segway experience is unique and thrilling, and the machine's ability to turn on a sixpence guarantees an exciting ride.

After a quick briefing you will be equipped with essential safety gear for your Segway experience. Once you have completed a few short games to build up your confidence, you will be unleashed to practice your new-found skills and speed through a variety of obstacles set out on the hotel's grounds. Segways make for an excellent stand-alone activity and are also perfect to go alongside a range of country sports.

4X4 CHALLENGE

Enjoy an exciting off-road driving experience just minutes from Cliveden on the stunning 100-acre grounds of nearby Hedsor House. The estate's mile-long track offers the ideal off-road challenge, either as a stand-alone event or as part of a wider team-building programme.





EXTREMELY SPORTING



EXTREMELY SPORTING

Set in the beautiful grounds of Cliveden a myriad of sporting pursuits can be tailored to suit your time and budget; any one of them will make an entertaining stand-alone activity or can be combined with others for an exciting multi-activity event. Perfect for client entertainment or simply spending time with colleagues, the activities can be offered in a half-day format or for just an hour to enhance your programme.

ARCHERY	FERRET RACING
CROQUET TUITION	GUN DOG HANDLING
DUCK HERDING	CRYSTAL BALL CHALLENGE
FALCONRY	DUCK HERDING



TEAM BUILDING WITH A PURPOSE

People love to do things that matter and companies that encourage employees to take time to participate in events which give back to the community create a caring and fulfilling culture back in the workplace. You can organise a great team activity with a purpose and harness the energy and investment expended to deliver added value for your company and your participants. The following activities are both entertaining and empowering and in most cases can be run indoors and out.

BIKE BUILD

This 2.5 hour challenge kicks off with a briefing and presentation from the chosen charity. Participants will learn how the bikes will be used creating a strong incentive and emotional bond for the group. Teams of 5-8 guests will each be allocated a professional workshop with all the tools and equipment required to build one bike, but before they can start one member of the team has to get The Knowledge.

The Knowledge session provides the designated individuals with the skills required to build the bike which they then share with the rest of their team before coming up with a plan. 'Curve balls' will be thrown at them along the way: insufficient budget, missing parts and other challenges to overcome. Teams may need to collaborate to ensure they get their bike is built on budget and on time!



ON BOARD

This 2 hour challenge combines a mixture of street cred, art and common sense, as team members work together to create a unique masterpiece on a skateboard. A briefing and presentation about the charity project that will receive the finished boards will create an emotional bond which helps focus the teams and makes their efforts worthwhile. Each team of 7 participants will build two skateboards. The teams will need to allocate roles including Yuda - responsible for overall project management and collating feedback; Banksies - tasked with interpretation of the brief and ensuring the deck meets the design requirements; Elons - in charge of manufacture; and Hiroshiges - meeting the strict safety guidelines.



The teams will be provided with a brief including style, colour and theme. They will have to browse the shop to see what they can obtain and then take on challenges to gain the items they need. Once the teams have everything they need they can assemble and decorate their boards before presenting them to the whole group to demonstrate how they have fully met the brief. And of course at the end the newly built boards will be presented to the charity's representative.

FUN HOUSE

Working in groups of 8-10, teams need to build, paint and decorate their own playhouse. All the parts, paints and materials required to complete the activity are included, along with a helpful support crew.

Each team starts with similar resources, tools and equipment, including money and a basic flat packed Fun House kit. Teams can purchase additional kit, tools and decorating items in order to complete their creation.

When finished the Fun Houses will be delivered to a deserving charity such as the NSPCC's Neglect programme or to a specific charity of your choosing.



EAT, DRINK
and BE MERRY

EAT, DRINK & BE MERRY

For well over 200 years Cliveden House has been known for lavish entertaining. Nobody could resist an invitation to Cliveden; from Chaplin to Churchill, Lawrence to Lennon... the House has been renowned throughout the centuries for fine hospitality. Take a trip behind the scenes and learn how to entertain in style.

THE CHAMPAGNE DAMES HIGH TEA

Seduce your stakeholders with a uniquely rich yet accessible introduction to the world's most enigmatic fine wine... Discover the fascinating stories of the strong-willed female entrepreneurs who successfully challenged women's traditional role in society and came to the fore in the champagne industry. Tantalise your taste buds on signature champagne styles crafted by these great dames of champagne as you revel in this 5-star high tea experience with a twist.



WHISKY TASTING

Cliveden offers informal whisky tasting events in the House's atmospheric candlelit cellar. The event includes an entertaining presentation about the history of whisky, the different types and how to best savour your drink. Step-by-step instruction in how to get the most from tasting single cask, single malt whisky to more adventurous couplings of whisky with food can also be provided. Discover the art, skill and magic of whisky blending and even have a go at creating your own unique brand.



WINE TUNNEL TOUR AND TASTING

Venturing into the candlelit tunnels beneath Cliveden House, guests will discover a magical setting for tutored tastings. Fun and informative, and suited to both novices and serious wine connoisseurs, your tasting will be hosted by Cliveden's Head Sommelier. Focusing on specific wine regions, food and wine matching or featuring seasonal themes, he will expertly cover tasting techniques, putting words to wine so you can find out what you like and why. To enhance the experience a fabulous eight-course tasting menu expertly paired with the finest wines can be enjoyed in the House's 348-year-old vaulted cellar.



FORAGING

Foraging is growing in popularity with increasing enthusiasm for gathering healthy and nutritious food from wild and natural places. The trend is particularly relevant in today's climate of unacceptable food waste and the demands from supermarkets for perfection. Add to this the current interest in creative events combining food and nature, and you have a perfect recipe for a memorable activity. In partnership with Naked Jam, the artisan producer of award-winning jams and preserves, groups can now experience bespoke foraging events at Cliveden.

Enjoying a guided ramble tailored to the seasons, guests will explore hundreds of acres of woodland and formal gardens with expert forager Jennifer Williams. There will be an opportunity to learn about and gather the wide range of seasonal wild foods that grow on the estate including hedgerow berries, leaves, flowers and fruits. Jennifer will then help the guests transform the day's bounty into delicious cordials and cocktails which they can take home, along with the recipes and a souvenir guide to foraging.



COCKTAILS ANYONE?

Ever since the Astors entertained Franklin Roosevelt and Charlie Chaplin came to stay, cocktails at Cliveden have been an integral part of entertaining at the House. Waldo's is an ideal spot to try the intoxicating art of cocktail making under the watchful eye of our top bottle spinners. After an initial tutorial in blending, teams will compete to create the perfect tippie. Trickier than it sounds, each team must explain the inspiration behind their creation, the technical details of its blend, along with the alcoholic content.



THE SWEET LIFE

Our professional chocolatier will school you in the fine art of creating delicious artisan chocolates. Armed with your newly found knowledge, you and your party will divide into teams and be challenged to design, make and market your own brand of chocolates. In the style of *The Apprentice*, teams will then present their creations to "The Board" in the hope of winning the competition.



CANAPÉ CAPERS

Cook up your own canapés in this tasty team-building event. In true *MasterChef* style, teams are provided with a variety of ingredients, and under the expert eye of the chef, must devise, design and deliver a selection of canapés within an allocated time. Cooking ability is a plus but creativity, careful planning as a team, attention to detail and the ability to remain calm under pressure are also a must for this competitive event.



CLIVEDEN:
ALWAYS *in* FASHION

CLIVEDEN: ALWAYS IN FASHION

One of the most famous women in early 20th century Britain, Nancy Astor was known for her great wealth and style, making her one of Harry Gordon Selfridge's favourite customers. Two of her much-loved purchases were hats and scent.

THE SWEET SMELL OF SUCCESS

With a host of celebrities creating signature fragrances, why shouldn't you do the same? Learn to identify and understand the properties of a range of exquisite essential oils sourced from the world's finest ingredients. Choose your favourite tones and then master the process of designing your own personal fragrance. As a memento of the session you will be presented with your perfume in a beautiful atomizer. This unique and creative event can be presented either as an individual experience, or as a half or full day teambuilding Apprentice style challenge.



HATS OFF!

With Cliveden's elegant surroundings and classical music for inspiration, you will learn the delicate art of creating stunning hats and fascinators with a multi-award winning milliner. Benefiting from expert advice and the finest materials, create an exquisite and original headpiece worthy of Mr Selfridge which you will cherish for many years. You will be served delicate light bites and the finest teas presented on antique tea sets whilst you relax, build relationships and get creative.



CLIVEDEN

Taplow | Berkshire | SL6 0JF

Tel: +44 (0) 1628 668561

E: special.events@clivedenhouse.co.uk

www.clivedenhouse.co.uk

